



FEATURE LIST

GENERAL RESIDENCE FEATURES

- FLOOR TO CEILING WINDOWS
- SPACIOUS BALCONIES
- LIFE SAFETY SYSTEM, INCLUDING HARD WIRED DETECTORS AND SPRINKLER SYSTEM
- SOUND ATTENUATION BETWEEN RESIDENCES
- STRUCTURED WIRING NETWORK WITH WI-FI IN PUBLIC AREAS
- ONE PARKING SPACE (DEEDED)
- TYPICAL MINIMUM 9' CEILING HEIGHT
- ITALIAN PORCELAIN TILE FLOORING 16x16
- PRE-WIRING FOR PRIVATE SECURITY SYSTEM (SECURITY SYSTEM IS OPTIONAL)
- 7'0" ELEGANT TWO PANEL ENTRY DOORS

KITCHEN FEATURES

- ITALIAN PORCELAIN TILE FLOORING 16x16
- EUROPEAN STYLE CHERRY CABINETS WITH 36" UPPERS
- FULL PANTRY CLOSET
- GRANITE COUNTERTOP & BACKSPLASH
- UNDER MOUNT DOUBLE BOWL STAINLESS STEEL SINK
- STAINLESS STEEL APPLIANCES
- TRACK LIGHTING AT CEILING

BATHROOM FEATURES

- ITALIAN PORCELAIN TILE 16x16 FLOORING
- EUROPEAN STYLE CHERRY CABINETS
- GRANITE COUNTERTOPS
- LINEN CABINET IN MASTERBATH
- UNDER MOUNT SINKS
- PEDESTAL SINKS IN POWDER ROOM
- DECORATIVE MIRRORS AND LIGHTING ABOVE VANITIES
- DESIGNER FAUCETS
- ELONGATED TOILETS
- 40" WIDE SOAKING TUBS WITH PRE-WIRING FOR WHIRLPOOL TUB IN MASTERBATH (WHIRLPOOL TUB IS OPTIONAL)
- 3/8" GLASS SHOWER ENCLOSURES WITH FLOOR TO CEILING ITALIAN PORCELAIN TILE

PENTHOUSE RESIDENCE FEATURES

- FLOOR TO CEILING WINDOWS
- SPACIOUS BALCONIES
- SOUND ATTENUATION BETWEEN RESIDENCES
- TWO PARKING SPACES (DEEDED)
- STORAGE UNIT
- MINIMUM 10' CEILING HEIGHT
- STRUCTURED WIRING FOR VIDEO/DATA/TELECOM
- PRE-WIRING FOR PRIVATE SECURITY SYSTEM (SECURITY SYSTEM IS OPTIONAL)
- 8'0" ELEGANT TWO PANEL ENTRY DOORS

KITCHEN FEATURES

- MARBLE FLOORING 18x18
- EUROPEAN STYLE ANEGRE CABINETS WITH 42" UPPERS
- FULL PANTRY CLOSET
- GRANITE COUNTERTOP
- UNDER MOUNT DOUBLE BOWL STAINLESS STEEL SINK
- STAINLESS STEEL APPLIANCES
- TRACK LIGHTING AT CEILING

BATHROOM FEATURES

- MARBLE FLOORING 18x18 IN MASTERBATH AND POWDER ROOMS
- MARBLE FLOORING 16x16 IN GUESTS BATHS
- MARBLE COUNTERTOPS
- FULL HEIGHT LINEN CABINET IN MASTERBATH
- CABINETS COORDINATED WITH KITCHEN UNDER MOUNT SINKS
- DECORATIVE MIRRORS AND LIGHTING ABOVE VANITIES
- ELONGATED TOILET
- 40" WIDE WHIRLPOOL TUBS IN MASTERBATH
- 1/2" GLASS SHOWER ENCLOSURES WITH 16x16 FLOOR TO CEILING MARBLE IN MASTERBATH
- 3/8" GLASS SHOWER ENCLOSURES WITH 16x16 FLOOR TO CEILING MARBLE ON SHOWER WALLS IN GUESTS BATHS
- 30" SOAKING TUBS IN GUESTS BATHS

BUILDING FEATURES

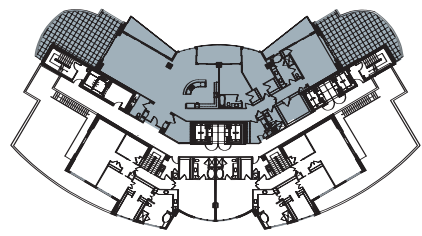
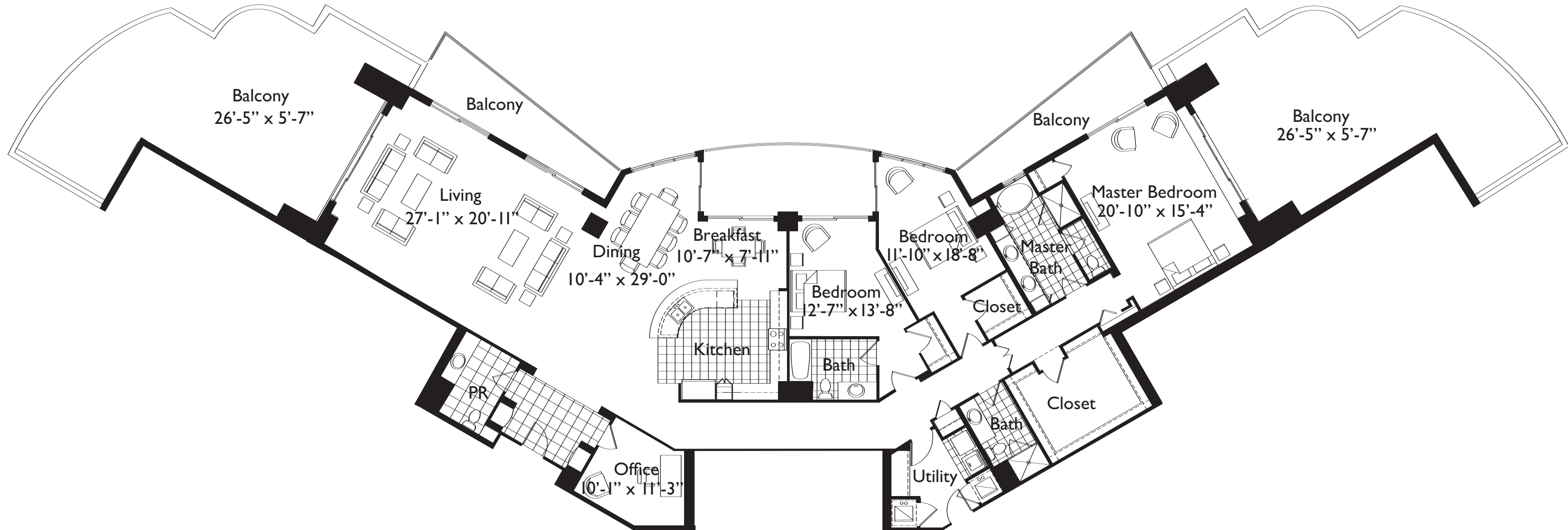
- 24 HOUR DOORMAN
- VALET & CONCIERGE SERVICE
- PRIVATE OUTDOOR POOL AREA SURROUNDED WITH PRIVATE CABANAS
- CLUB ROOM WITH CATERING KITCHEN
- STATE OF THE ART FITNESS FACILITY WITH INDIVIDUAL WELLNESS PROGRAMS
- PRIVATE EXERCISE ROOM
- BUSINESS CENTER WITH WI-FI
- PRIVATE LIBRARY
- MEDIA ROOM WITH CONFERENCE FACILITIES
- PRIVATE WINE CELLAR

MODEL C3

FOR MORE INFORMATION
PLEASE VISIT OUR SALES CENTER
LOCATED AT FASHION SHOW MALL
866.699.8080
WWW.ALLURELASVEGAS.COM

This offering is made solely pursuant to the public offering for the condominium and no statement should be relied upon except as specifically set forth in the public offering statement. This is neither an offer to sell, or a solicitation of offers to buy, any of the condominium units in those states where such offers of solicitation cannot be made. Any references to prices, specifications or locations are subject to change without notice. WARNING: THE CALIFORNIA DEPARTMENT OF REAL ESTATE HAS NOT INSPECTED, EXAMINED OR QUALIFIED THIS OFFERING. This is not an offer to residents of New York or New Jersey or where prohibited by state statutes. Models used in this ad do not reflect any preferences.





A/C Area = 3,574 sf
Balcony Area = 2,051 sf
Total Area = 5,625 sf
units mirror on floor

This offering is made solely pursuant to the public offering for the condominium and no statement should be relied upon except as specifically set forth in the public offering statement. This is neither an offer to sell, or a solicitation of offers to buy, any of the condominium units in those states where such offers of solicitation cannot be made. Any references to prices, specifications or locations are subject to change without notice. WARNING: THE CALIFORNIA DEPARTMENT OF REAL ESTATE HAS NOT INSPECTED, EXAMINED OR QUALIFIED THIS OFFERING. This is not an offer to residents of New York or New Jersey or where prohibited by state statutes. Models used in this ad do not reflect any preferences.